

# Smart Security - Simplified Management

access**iq**®



# PERSONALIZED ACCESS FOR SMALL COMMUNITIES

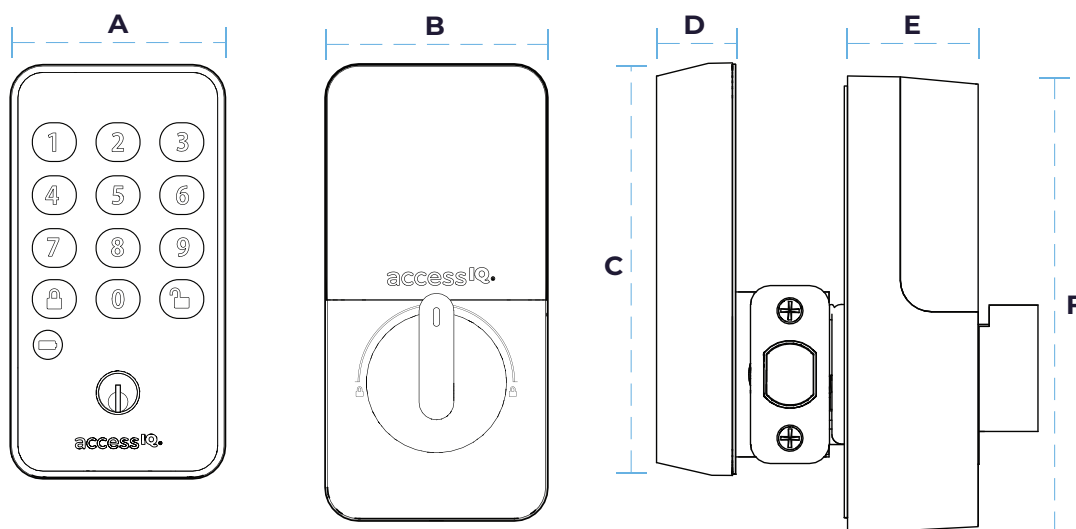


Managing mechanical keys is costly, with expenses reaching up to \$6,000\* annually for a 50-unit building due to locksmith fees, lockouts, and key replacement. **accessIQ** offers a smart, affordable solution designed to simplify property management, enhance security, and provide seamless access for tenants—all managed through your phone or computer.

\*Based on a locksmith rate of \$200/hour and 30 hours of service annually.



A	B	C	D	E	F
2.9 in.	2.8 in.	5.4 in.	1.0 in.	1.7 in.	5.8 in.



<b>Door Prep:</b>	Face Bore: 2-1/8 in. or 1-1/2 in., edge bore: 1 in.
<b>Backset:</b>	Adjustable for 2-3/8 in. or 2-3/4 in.
<b>Door Thickness:</b>	1-3/8 in. to 1-3/4 in.
<b>Cylinder:</b>	KW1
<b>Faceplate:</b>	2-1/4 in. Round corner, 2-1/4 in. square corner
<b>Strikes:</b>	2-3/4 in. Round corner, 2-3/4 in. square corner
<b>Bolt:</b>	1 in. Throw, steel, anti-saw pin
<b>User Codes:</b>	Up to 50 user codes
<b>ANSI:</b>	Meets ANSI Grade 2 standards
<b>UL:</b>	Fire rated 20 minutes
<b>Battery:</b>	Rechargeable 9,600mAh lithium-ion battery
<b>Operating Temp:</b>	-31°F to 151°F (-35°C to 66°C)



Exterior of lock

Interior height designed to accommodate a privacy latch/deadbolt

### Finishes Available:



**Satin Nickel**  
SKU: Q1001-619



**Oil Rubbed Bronze**  
SKU: Q1001-613



**Matte Black**  
SKU: Q1001-622

## KEY FEATURES



**Keyless Entry:** Say goodbye to fumbling for keys and late night lock-outs. With AccessIQ, tenants can access their apartment effortlessly using a smartphone, key card or PIN code.



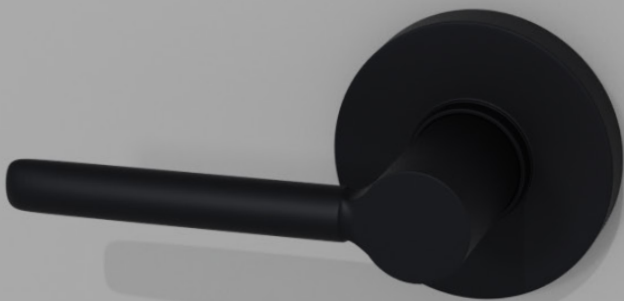
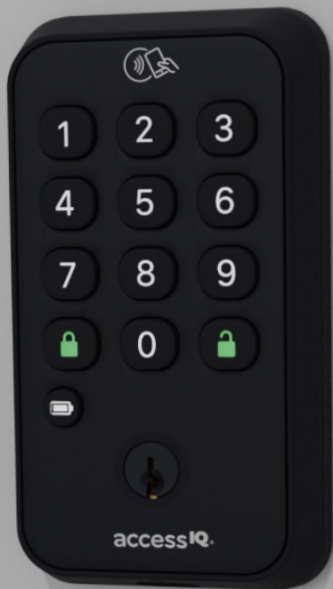
**Secure Mobile App:** Our intuitive mobile app lets you; lock and unlock your door, see an activity log of lock access, check battery charge level and lock status, and grant access to family, friends and service providers. With the gateway this can all be done from anywhere in the world.





**Virtual Keys:** Share access with ease. Grant temporary or permanent virtual keys to visitors, housekeepers, maintenance staff, and more, ensuring secure and monitored entry.



**Advanced Encryption:** Rest easy knowing your data is safe. AccessIQ utilizes state-of-the-art encryption to safeguard your personal information and keep unauthorized access at bay.



- 1 Apple Wallet/Google Wallet  
- 2 Keycard
- 3 Pin code
- 4 Mobile app
- 5 Mechanical key



**Auto-Lock:** No more wondering if you locked the door. AccessIQ's auto-lock feature ensures your door is securely locked after a set and customizable period.



**Real-Time Notifications:** With the gateway, stay informed about your home's security. Receive instant notifications whenever someone enters or exits your apartment, ensuring you're always in the know.



**Motorized latch:** Motorized latch for convenience in auto-locking and remote operation.



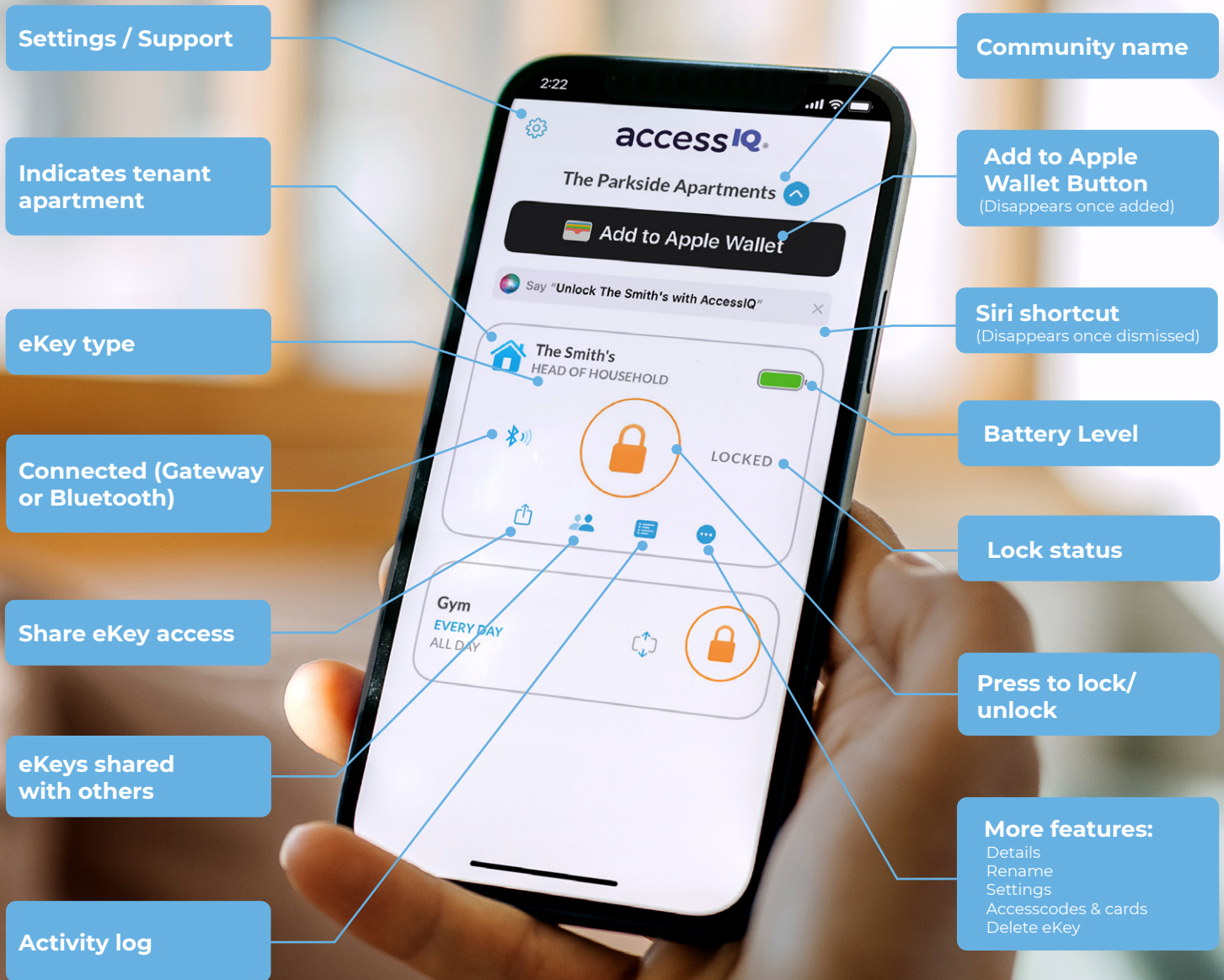
**Sleek Design:** Designed to complement any décor, AccessIQ seamlessly blends functionality with style, enhancing the aesthetics of your living space.



**Rechargeable Battery:** AccessIQ's battery technology will last over a year on a single charge (up to 10 activations/day). Battery status for each lock is on the web portal, in the app and on the lock. It's easy to charge and you won't be throwing away costly disposable batteries.







TENANT  
APARTMENT

Download the AccessIQ App





## SMART SECURITY - SIMPLIFIED MANAGEMENT



COMMON  
AREA



## SPECIFICATIONS & DIMENSIONS

For the AccessIQ™  
Gateway.

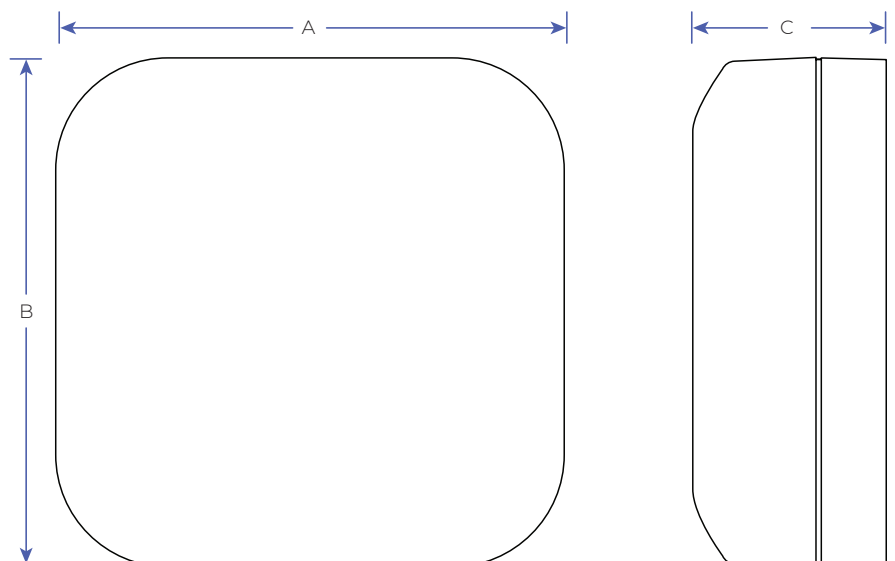


### Specs

<b>Power:</b>	100-240V, 50/60Hz via AC Adapter (Included)
<b>Power connection:</b>	3' USB-C Cable (Included)
<b>Connectivity:</b>	Cellular LTE/5G, Bluetooth Low Energy (BLE)
<b>Range:</b>	Up to 300 feet (line of sight)
<b>Security:</b>	End-to-end advanced encryption
<b>Device support:</b>	Capable of connecting up to 8 smart locks
<b>Installation:</b>	Wall Mounted (hardware included)
<b>Operating Temperature:</b>	-10°C to 45°C (14°F to 113°F).

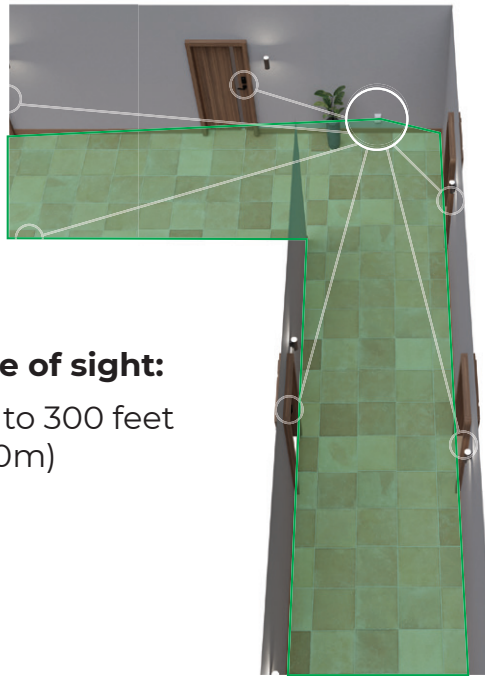
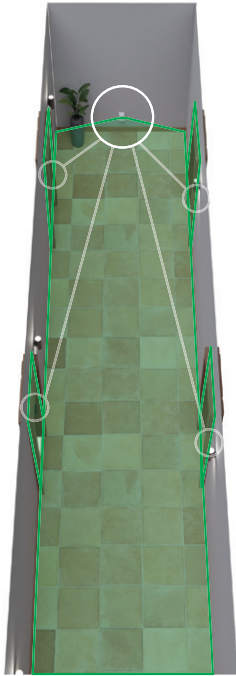
### Dimensions

	Gateway (Q0101-GW)
A (in.)	4.7
B (in.)	4.7
C (in.)	1.8





## Indoor Locations



**Line of sight:**  
Up to 300 feet  
(100m)



**1** Gateway supports  
up to **8** Locks

## Outdoor Locations



**1** Gateway supports  
up to **8** Locks

**Line of sight:**  
Up to 300 feet  
(100m)



SPECIFICATIONS  
& DIMENSIONS

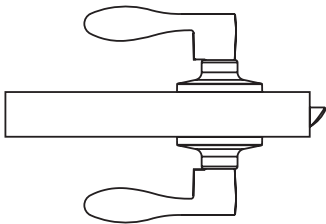
For the AccessIQ™  
Passage Levers.



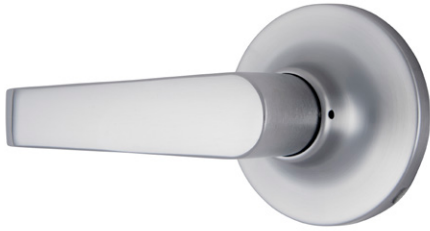
Specs

Door Preparation:	Cross bore 2-1/8 in., edge bore 1 in., 1 in. x 2-1/4 in. latch mortise
Backset:	2-3/8 in. or 2-3/4 in.
Door Thickness:	1-3/8 in. to 1-3/4 in.
Chassis:	Tubular
Faceplate:	2-1/4 in. Round corner
Strike:	2-1/4 in. Full lip
Bolt:	1/2 in. Throw
UL Fire:	3 Hour fire rated
ADA:	ADA compliant
Door Handing:	Reversible for left or right handed doors
ANSI Grade:	Meets ANSI Grade 3 standards

Function



Passage  
Non-locking



**Aria**  
Satin Nickel



**Wave**  
Oil Rubbed Bronze

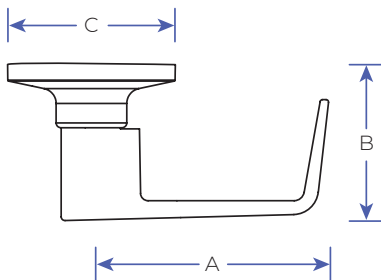


**Axel**  
Matte Black

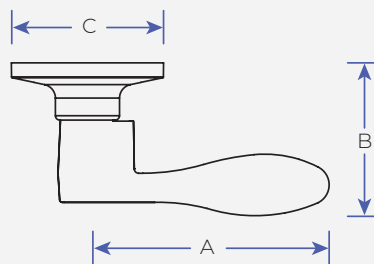
Style	Satin Nickel - 619	Oil Rubbed Bronze - 613	Matte Black - 622
Aria (Q1012)	●	●	●
Wave (Q1010)	●	●	●
Axel (Q1014)	●	●	●

## Dimensions

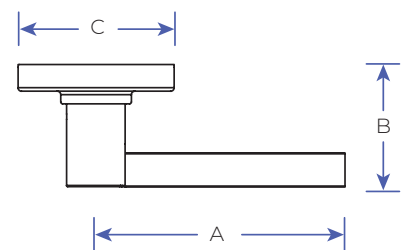
**Aria**



**Wave**



**Axel**



	A (in.)	B (in.)	C (in.)
Aria (Q1012)	4.1	2.4	2.6
Wave (Q1010)	4.6	2.4	2.4
Axel (Q1014)	4.2	2.2	2.4

# Smart Security - Simplified Management

accessIQ®



aiq®

accessIQ.com  
877 ENTRYIQ (877 368-7947)

85100-00012\_REVC 03/25